



Liz Tuddenham <liz.tuddenham@mfschool.net>

Research Schools Network newsletter, issue 3

2 messages

Huntington Research School <info@researchschool.org.uk>

2 February 2017 at 10:00

Reply-To: info@researchschool.org.uk

To: "liz.tuddenham@mfschool.net" <liz.tuddenham@mfschool.net>



Research Schools Network Newsletter

Issue #3

February 2017

WELCOME

Welcome to the third edition of the Huntington Research School newsletter. We are exciting about the growing developments for Research Schools national and the emerging evidence-based training programmes. We hope you enjoy this edition, with topics stretching from national policy, the 'growth mindset' backlash, and boys and homework.

IN THIS ISSUE

[Latest News](#)

[Evidence](#)

[Events and training](#)

LATEST NEWS



FUNDING ANNOUNCED FOR RESEARCH SCHOOLS IN NEW OPPORTUNITY AREAS

Speaking to school leaders at a recent event hosted by Pricewaterhouse Coopers and the Sutton Trust, the Education Secretary Justine Greening announced that the government's 'opportunity areas' programme would now be expanded to include a further six opportunity areas. She also announced plans to establish a Research School in each of the 12 opportunity areas.

[READ MORE](#)

RESEARCH SCHOOLS NETWORK NAMED



“BEST EDUCATION RESEARCH OF 2016 FOR SCHOOLS”

In a feature published by *Schools Week*, Stuart Kime included the Research Schools Network in his list of 'Best education research of 2016 for schools', and said that the Network: "... recognises that there is no educational silver bullet and, instead, takes the long view of sustained school improvement from the ground up."

[READ MORE](#)



CHARTERED COLLEGE OF TEACHING OPENS MEMBERSHIP

The Chartered College of Teaching opened to members on 18 January. The College aims to be a teacher-led organisation which will support professional development, promote and share evidence-informed practice, and recognise excellence.

[FIND OUT MORE ON THEIR WEBSITE](#)

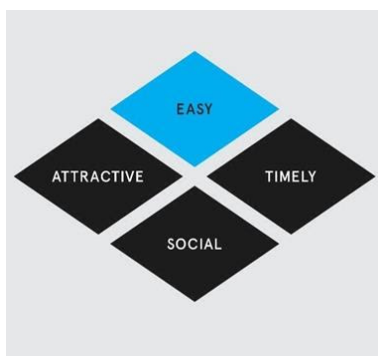
What has research evidence ever done for us?



DEVELOPING SCHOOL RESEARCH-LEADS

This last month, Huntington Research School began training prospective Research-leads from a range of schools, both primary and secondary, from across North Lincolnshire. The role of Research-leads is an emerging role nationally, so it is useful to share the 'what', 'why' and 'how' of having a Research-lead in your school.

[READ MORE](#)



THE DFE GO CHOMPING AT THE BIT

An interesting article in *Schools Week* revealed how the Department for Education are recruiting a team of "behavioural insights" experts. So why are they chomping at the BIT (in this case, the Behavioural Insights Team) and why is this useful knowledge for schools?

[READ MORE](#)

EVIDENCE



LAZY BOYS AND HARDWORKING GIRLS?

Research has found that homework can have a positive effect on educational achievement and attainment. According to the EEF Toolkit, the impact of homework on learning in secondary schools is consistently positive (leading to on average five months' additional progress). However, getting our students, and particularly the boys, to reap these benefits by not only attempting, but successfully engaging in these homework tasks, can seem like a never ending battle. New research has recognised a consistent gender gap.

[READ MORE](#)



WHAT DOES RESEARCH TELL US ABOUT CPD?

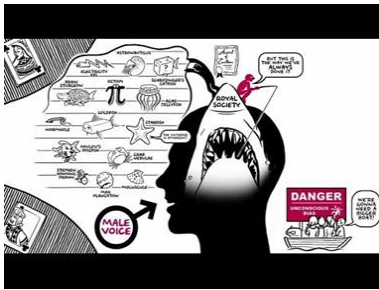
David Weston, Chief Executive of the Teacher Development Trust

When CPD works well it really benefits teachers, pupils and whole school improvement. It is absolutely at the heart of school culture and practice, so ensuring that it is underpinned by evidence is paramount. I set up the Teacher Development Trust in 2012 to enable more effective CPD nationally and in 2015 we launched Developing Great Teaching, a review of international research into what constitutes effective professional development for teachers. From this, the recent DfE's CPD Standards, alongside other research, we can draw out some key findings around CPD below.

[READ MORE](#)

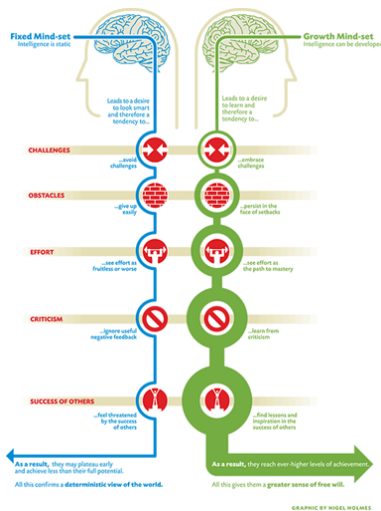
BIASED...WHO? ME?

Teaching is a helluva busy job. We deal with hundreds of people on a weekly basis, with seemingly too little time



and too much pressure. To manage the challenge, we take shortcuts. Shortcuts are wise. When we mark assessments, group students, adapt our lesson plans, we are making quick thinking decisions, often based on such short-cuts. Crucially, however, our mental shortcuts can backfire and prove damaging. Researchers have found that our biases infect our thinking when we are marking the work of our students.

[READ MORE](#)



WHAT CAN WE LEARN FROM DWECK'S 'GROWTH MINDSET' THEORY?

In education we are prone to seek out quick fixes. We are time poor and too often we lack the expert support to make decisions based upon robust evidence. Not only that, when robust evidence does come along, all too often it is quickly proved to be not so substantial as we first thought. Carol Dweck's research on 'growth' and 'fixed' mindsets is an ideal case study for this approach and there is a great deal we can learn about approaching new initiatives in schools, how we implement, them and what we can learn from them when they do, or do not work out as we had planned.

[READ MORE](#)



EFFECTIVE READING PROGRAMMES FOR SECONDARY STUDENTS

In recent years, major initiatives in the US and UK have added greatly to the amount and quality of research on the effectiveness of secondary reading programmes, especially targeted programmes for struggling readers. As a result, the Johns Hopkins Center for Research and Reform in Education was able to complete an updated review of the research on secondary reading programmes using tougher standards than would have been possible in earlier reviews, and assembling data from a much larger pool of programmes and studies.

[READ MORE](#)

EVENTS AND TRAINING



LEADING LEARNING: LEADERSHIP TRAINING TO ENHANCE CPD

We know that improving the quality of teaching and learning in the classroom has the biggest impact on student outcomes. Training teachers, using robust evidence and expert support, should be our core business for school improvement.

Huntington Research School, part of the national Research School Network, run by the EEF, and the Institute for Effective Education based at York University, is running **'Leading Learning' training** for school leaders, to 'enhance teaching and learning with evidence-based practice'.

[READ MORE](#)



LEADING TAs FOR MAXIMUM IMPACT TRAINING PROGRAMME

Teaching Assistants play a vital role for the success of our students across the country. There is an increasing awareness that leading our TA teams effectively can have a dramatically positive difference for our schools.

In the recent OFSTED School Inspection Update, from Sean Harford, it was great to see a recognition of the important role of TAs by our inspectorate, as well as references to the emerging evidence from the Education Endowment Foundation (EEF) on the effective deployment of Teaching Assistants.

At Huntington Research School, an EEF Research School, we are running a programme for school leaders with Diane Heritage, who has helped shape the EEF training, Claire Constantopoulos, an experienced Headteacher and LLE, and Alex Quigley, Director of Research School.

[READ MORE](#)



Kyra Research School is holding its launch conference on the 3rd February 2017 in Lincoln.

The conference is for all practitioners and leaders in early years, primary, secondary and special settings, who wish to engage in research, wherever they may be on their research journey. The day will include keynote speaker Professor Steve Higgins, co-author of Sutton Trust/EEF Teaching and Learning Toolkit, a range of interactive workshops, discussion and networking. Be part of the story...join the network.

To book a place or learn more about the conference please follow this link: <https://event.bookitbee.com/e/cgn9a>



EEF PUBLISHES FREE ONLINE COURSE TO SUPPORT SCHOOLS TO MAKE BEST USE OF TAs

New evidence from the EEF has shown that when Teaching Assistants (TAs) are trained to deliver structured one-on-one or small group interventions they typically add 3-4 additional months of educational progress for struggling pupils, compared with more standard ways of using TAs.

In order to support the best use of teaching assistants, the EEF has teamed up with the TES to create a completely free online course. This includes practical examples of how to implement the recommendations, as well as interviews with head teachers who have changed the way they deploy their TAs and step-by-step guidance. The course, hosted on the EEF website, consists of text, video, curated links and downloadable documents.

[FIND OUT MORE](#)

RESEARCH SCHOOLS NETWORK

The Research Schools Network is a collaboration between the Education Endowment Foundation (EEF) and the Institute for Effective Education (IEE) to create a network of schools that will support the use of evidence to improve teaching practice.

CONTACT US

Email:

huntresearchsch@gmail.com

Twitter:

[@HuntResearchSch](https://twitter.com/HuntResearchSch)

Huntington Secondary
Huntington Road
York
YO32 9WT

[Forward to a friend](#)

[Unsubscribe](#)

Liz Tuddenham <liz.tuddenham@mfschool.net>

2 February 2017 at 13:22

To: Chris Power Barkston Ash Head <headteacher@barkstonash.n-yorks.sch.uk>, Jessica Dales <jdales@monkfryston.n-yorks.sch.uk>

Interesting piece on CPD

Kind Regards,

Liz Tuddenham

Business Manager

STAR Teaching School Alliance

Tel: 07565 398897



----- Forwarded message -----

From: **Huntington Research School** <info@researchschool.org.uk>

Date: 2 February 2017 at 10:00

Subject: Research Schools Network newsletter, issue 3

To: "liz.tuddenham@mfschool.net" <liz.tuddenham@mfschool.net>



**Research Schools Network
Newsletter**

Issue #3
February 2017

WELCOME

Welcome to the third edition of the Huntington Research School newsletter. We are exciting about the growing developments for Research Schools national and the emerging evidence-based training programmes. We hope you enjoy this edition, with topics stretching from national policy, the 'growth mindset' backlash, and boys and homework.

IN THIS ISSUE

[Latest News](#)

[Evidence](#)

[Events and training](#)

LATEST NEWS



FUNDING ANNOUNCED FOR RESEARCH SCHOOLS IN NEW OPPORTUNITY AREAS

Speaking to school leaders at a recent event hosted by Pricewaterhouse Coopers and the Sutton Trust, the Education Secretary Justine Greening announced that the government's 'opportunity areas' programme would now be expanded to include a further six opportunity areas. She also announced plans to establish a Research School in each of the 12 opportunity areas.

[READ MORE](#)



RESEARCH SCHOOLS NETWORK NAMED "BEST EDUCATION RESEARCH OF 2016 FOR SCHOOLS"

In a feature published by *Schools Week*, Stuart Kime included the Research Schools Network in his list of 'Best education research of 2016 for schools', and said that the Network: "... recognises that there is no educational silver bullet and, instead, takes the long view of sustained school improvement from the ground up."

[READ MORE](#)

CHARTERED COLLEGE OF TEACHING OPENS MEMBERSHIP



The Chartered College of Teaching opened to members on 18 January. The College aims to be a teacher-led organisation which will support professional development, promote and share evidence-informed practice, and recognise excellence.

[FIND OUT MORE ON THEIR WEBSITE](#)

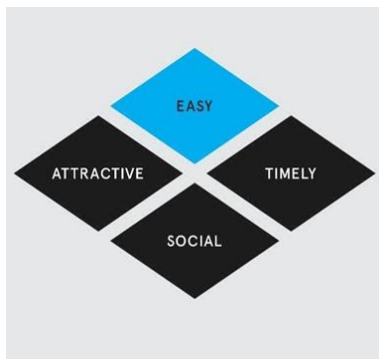
What has research evidence ever done for us?



DEVELOPING SCHOOL RESEARCH-LEADS

This last month, Huntington Research School began training prospective Research-leads from a range of schools, both primary and secondary, from across North Lincolnshire. The role of Research-leads is an emerging role nationally, so it is useful to share the ‘what’, ‘why’ and ‘how’ of having a Research-lead in your school.

[READ MORE](#)



THE DFE GO CHOMPING AT THE BIT

An interesting article in *Schools Week* revealed how the Department for Education are recruiting a team of “behavioural insights” experts. So why are they chomping at the BIT (in this case, the Behavioural Insights Team) and why is this useful knowledge for schools?

[READ MORE](#)

EVIDENCE



LAZY BOYS AND HARDWORKING GIRLS?

Research has found that homework can have a positive effect on educational achievement and attainment. According to the EEF Toolkit, the impact of homework on learning in secondary schools is consistently positive (leading to on average five months' additional progress). However, getting our students, and particularly the boys, to reap these benefits by not only attempting, but successfully engaging in these homework tasks, can

seem like a never ending battle. New research has recognised a consistent gender gap.

[READ MORE](#)

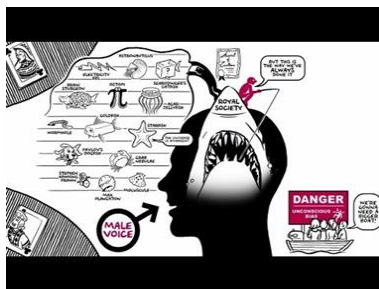


WHAT DOES RESEARCH TELL US ABOUT CPD?

David Weston, Chief Executive of the Teacher Development Trust

When CPD works well it really benefits teachers, pupils and whole school improvement. It is absolutely at the heart of school culture and practice, so ensuring that it is underpinned by evidence is paramount. I set up the Teacher Development Trust in 2012 to enable more effective CPD nationally and in 2015 we launched Developing Great Teaching, a review of international research into what constitutes effective professional development for teachers. From this, the recent DfE's CPD Standards, alongside other research, we can draw out some key findings around CPD below.

[READ MORE](#)

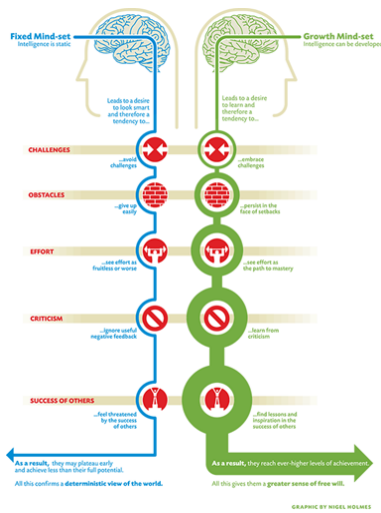


BIASED...WHO? ME?

Teaching is a helluva busy job. We deal with hundreds of people on a weekly basis, with seemingly too little time and too much pressure. To manage the challenge, we take shortcuts. Shortcuts are wise. When we mark assessments, group students, adapt our lesson plans, we are making quick thinking decisions, often based on such short-cuts. Crucially, however, our mental shortcuts can backfire and prove damaging. Researchers have found that our biases infect our thinking when we are marking the work of our students.

[READ MORE](#)

WHAT CAN WE LEARN FROM DWECK'S 'GROWTH MINDSET' THEORY?



In education we are prone to seek out quick fixes. We are time poor and too often we lack the expert support to make decisions based upon robust evidence. Not only that, when robust evidence does come along, all too often it is quickly proved to be not so substantial as we first thought. Carol Dweck's research on 'growth' and 'fixed' mindsets is an ideal case study for this approach and there is a great deal we can learn about approaching new initiatives in schools, how we implement, them and what we can learn from them when they do, or do not work out as we had planned.

[READ MORE](#)



EFFECTIVE READING PROGRAMMES FOR SECONDARY STUDENTS

In recent years, major initiatives in the US and UK have added greatly to the amount and quality of research on the effectiveness of secondary reading programmes, especially targeted programmes for struggling readers. As a result, the Johns Hopkins Center for Research and Reform in Education was able to complete an updated review of the research on secondary reading programmes using tougher standards than would have been possible in earlier reviews, and assembling data from a much larger pool of programmes and studies.

[READ MORE](#)

EVENTS AND TRAINING



LEADING LEARNING: LEADERSHIP TRAINING TO ENHANCE CPD

We know that improving the quality of teaching and learning in the classroom has the biggest impact on student outcomes. Training teachers, using robust evidence and expert support, should be our core business for school improvement.

We know that improving the quality of teaching in the classroom has the biggest impact on student outcomes. To do this, at a time of scarce resources, we need to improve the quality of our CPD. This innovative programme provides a comprehensive overview of the most important research evidence in education, including the EEF Toolkit, so that school leaders can devise a high impact CPD programme. Topics include metacognition, memory, and mindset. The programme will support you with a range of evidence-based tools to help you to lead learning with success and improve your CPD programme.

Why take part in this programme?

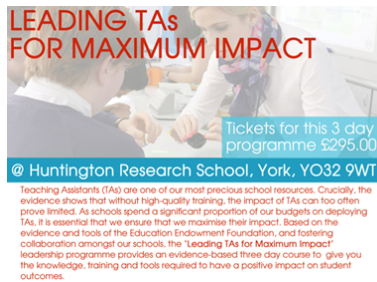
- To make evidence-informed decisions about improving teaching & learning
- To gain a range of tools to implement evidence-based CPD
- To meet the DfE 2016 Teachers' Professional

Who should take part in this programme?

- School Teaching & Learning leaders/CPD leads
- CPD leaders across SAs and MAs
- Prospective or existing Research leads
- Advanced skills teachers

Huntington Research School, part of the national Research School Network, run by the EEF, and the Institute for Effective Education based at York University, is running **'Leading Learning' training** for school leaders, to 'enhance teaching and learning with evidence-based practice'.

[**READ MORE**](#)



LEADING TAs FOR MAXIMUM IMPACT TRAINING PROGRAMME

Teaching Assistants play a vital role for the success of our students across the country. There is an increasing awareness that leading our TA teams effectively can have a dramatically positive difference for our schools.

In the recent OFSTED School Inspection Update, from Sean Harford, it was great to see a recognition of the important role of TAs by our inspectorate, as well as references to the emerging evidence from the Education Endowment Foundation (EEF) on the effective deployment of Teaching Assistants.

At Huntington Research School, an EEF Research School, we are running a programme for school leaders with Diane Heritage, who has helped shape the EEF training, Claire Constantopoulos, an experienced Headteacher and LLE, and Alex Quigley, Director of Research School.

[**READ MORE**](#)



Kyra Research School is holding its launch conference on the 3rd February 2017 in Lincoln.

The conference is for all practitioners and leaders in early years, primary, secondary and special settings, who wish to engage in research, wherever they may be on their research journey. The day will include keynote speaker Professor Steve Higgins, co-author of Sutton

Trust/EEF Teaching and Learning Toolkit, a range of interactive workshops, discussion and networking. Be part of the story...join the network.

To book a place or learn more about the conference please follow this link: <https://event.bookitbee.com/e/cgn9a>



EEF PUBLISHES FREE ONLINE COURSE TO SUPPORT SCHOOLS TO MAKE BEST USE OF TAs

New evidence from the EEF has shown that when Teaching Assistants (TAs) are trained to deliver structured one-on-one or small group interventions they typically add 3-4 additional months of educational progress for struggling pupils, compared with more standard ways of using TAs.

In order to support the best use of teaching assistants, the EEF has teamed up with the TES to create a completely free online course. This includes practical examples of how to implement the recommendations, as well as interviews with head teachers who have changed the way they deploy their TAs and step-by-step guidance. The course, hosted on the EEF website, consists of text, video, curated links and downloadable documents.

[FIND OUT MORE](#)

RESEARCH SCHOOLS NETWORK

The Research Schools Network is a collaboration between the Education Endowment Foundation (EEF) and the Institute for Effective Education (IEE) to create a network of schools that will support the use of evidence to improve teaching practice.

CONTACT US

Email:
huntresearchsch@gmail.com

Twitter:
[@HuntResearchSch](https://twitter.com/HuntResearchSch)

Huntington Secondary
Huntington Road
York
YO32 9WT

[Forward to a friend](#)

[Unsubscribe](#)

□